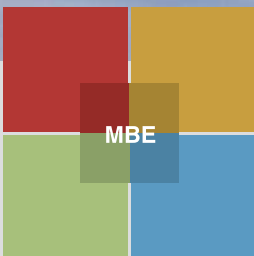


The Management System Model Business Excellence



„The company is as strong
as its weakest element.“

The contributions of the management system implementation

Model Business Excellence

Why to impelement the management system - MBE?

- To ensure perpetually results, vision realization and a mission
- To ensure a long-term organization competitive strength
- To have financial resources under the control
- To look after weak points and uphold organization leading
- To ensure a growth while simplifying organization leading

Managerial needs in the Czech republic

- To impelement the management system so that the organization will come less independent on staff exchange
- To hand over the company management to managers after its formation and at the same time to keep up the control over that
- To implement the management system, which a manager knows from a MBA school or from practise abroad
- To have tools for a new manager, who wants to get the management under control and ensure results
- To implement some specific areas into practise
- To have a practical and simple managing tool – one sheet of paper



What is the management system of Model Business Excellence?

The Model Business Excellence is a procedure/system of excellent organizational management . It is oriented on results achieving and presumptions creating. The system is based on a set of basic conceptions, which appear from experience of companies. This companies have excellent long-term results.

Conceptions, in which are excellent companies interested in:

- result orientation
- costumers direction
- management and constancy of objectives and intentions
- management on the basis of processes and facts
- everlasting improvements and inovations
- reciprocal and beneficial partnerships
- sociable responsibility
- consequential changes in practise

Model Business Excellence is used by 30.000 companies in the EU

Companies with excellent management in the EU:

Philips	DaimlerChrysler
Nokia	Deutsche Bank
Siemens	IBM Europe
BMW	Credit Suisse
TNT	Unilever
Nestle	...

„What is not measured,
that is not managed.“

The Management System - MBE - 1. part

Annual plan - base

Podtitul Model Business Excellence		Roční plán										Datum zpracování			
Strategické procesy - popis															
Cíle pro proces															
Strategická opatření		Podrobný záznam činnosti a rozpis výkonných programů (Kritická činnost, Koncepce, ...) Aktivita, Termín													
Ukazatel		MJ	2008	2009	2010	2011	2012	2013	2014	2015	2016	2017	2018	2019	2020
Měna zobrazení		MJ	2008	2009	2010	2011	2012	2013	2014	2015	2016	2017	2018	2019	2020

The MBE environment

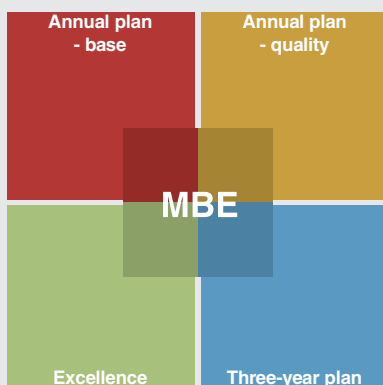
The MBE environment is a set of Excel tables, which is logically linked. It makes possible to link interrelated activities, have all the needed information in one place and ensure the disintegration from top to bottom to the needed level. It makes possible to depute to subordinates, it provides understanding, connecting and subordinates development. It is necessary to link indicators with a motivational system and reporting.

CLASS Programme - Breakfast Meeting

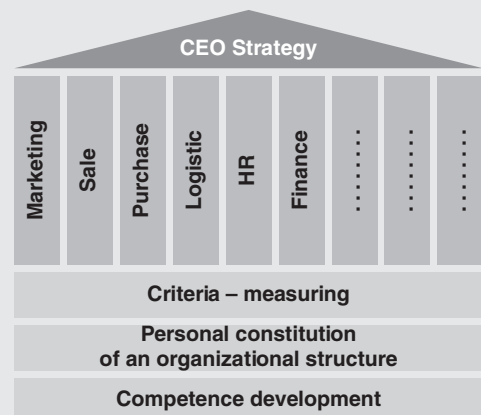
This programme is determined for executive heads, companies owners, top managers and managers responsible for successful implementation of a management system – Model Business Excellence (MBE). Personal meetings make possible a reciprocal experience exchange with the MBE implementation into the company use, discussing and solving common problems, understanding in managing system functioning and subvene between companies and Benchmarking.



4 Levels of MBE Project Model Business Excellence



How does copy the MBE system an organizational structure



Annual plan - quality

SWOT Analysis

SWOT analysis is a tool, which is used for an analysis of:

- macro
- markets and segments
- processes
- customers
- providers
- products
- competitives

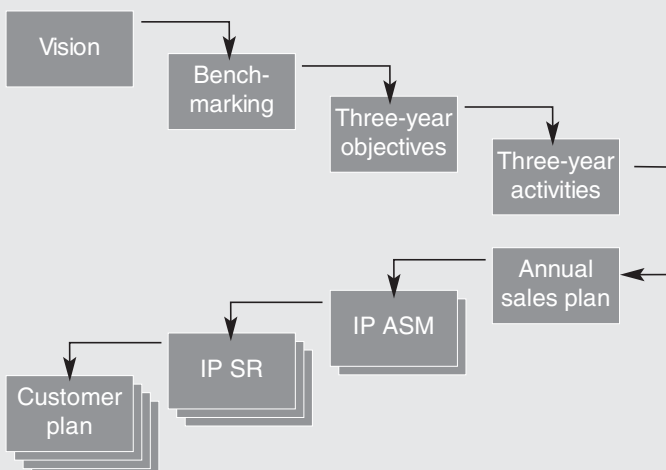
The objective is to set up the internal reaction so that we can balance the company and lead it with adjusted indicators.



Handbook

The handbook is a set of manuals and standards. There is defined a process of partial repeating activities for every position. It will ensure that partial processes will be leaded with quality and that the processes will be evaluated and improved. With the help of handbook, the new staff introduction and key activites measuring will be forced.

The disintegration of MBE leading system



4 realized areas of Model Business Excellence



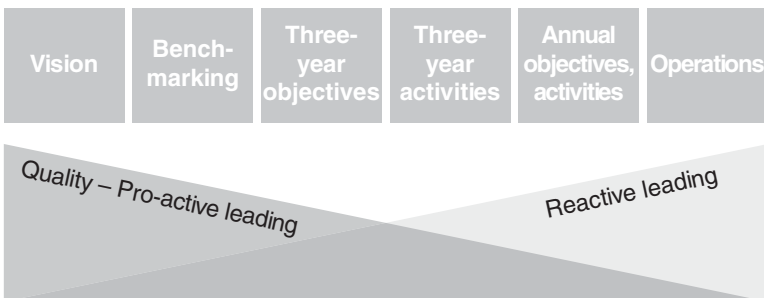
Three-year plan

Three-year plan

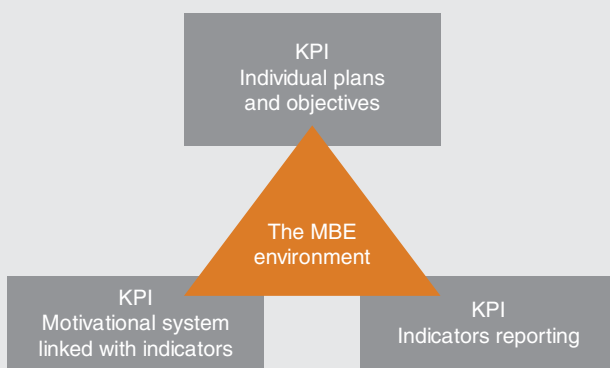
Three-year plans, eventually mid-term plans, are necessary for each company, which wants to plan activities in longer perspective than in the annual and which wants to ensure interlacing of visions and activities and mission and strategic objectives. This plan forecasts and simulates a realization of key projects, which require financing in several years. This all by means of activities form, numerical indicators and sources.



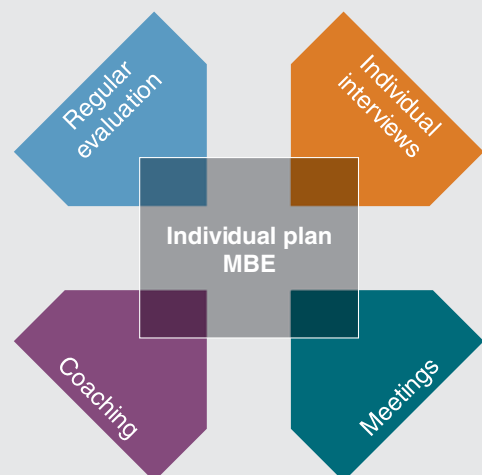
Management system structure - Model Business Excellence



3 basic environmental elements of Model Business Excellence



Model Business Excellence operations



The Management System - MBE - 4. part Excellence

Vision

Why a vision?

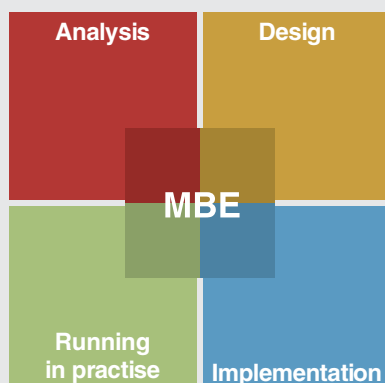
A uniform strategic direction brings advantages for a company and also for partial organizational units (e.g. branching limitation, easier decision making etc.)
Warning! The partial organizational unit strategy may not develop efficiency at the expense of the whole company. It is necessary to balance the company. The company has to lead up to ensuring the competitive advantage, which is defined by a strategic direction.



Benchmarking

Benchmarking is a systematic and running measuring process. It is a process of continuous comparing of organizational processes with business leaders anywhere in the world. Benchmark is a measured rate of „the best in category“ or a referential and measuring standard for comparing. This level of efficiency is appreciated as a Excellence standard for a specific entrepreneurial process.

Steps in project Model Business Excellence



The result after implementation of Model Business Excellence



The mission of the Palatinum company

Business Unit Consulting

The mission of the Palatinum company in management system development

To help organization get a competitive advantage
with management system implementation
- Model Business Excellence.

To help Czech companies/managers
expand into other countries.

Business Unit Training

The mission of the Palatinum company in competence training

To help create an elite of Czech managers and workers,
which will achieve in an international competition.

To afford customers the Business School concept. It will
help them with a well engaged and qualified organizational
structure, which generates results and which provides
delegating.

MS Share point

It is necessary to share individual and annual plans,
periodically evaluate them and solve its problems.
The MBE is not a static document. It is a living instrument,
which is complemented all the time and we work by means
of it.

If a company do not have a shared space, we can afford
a space in MS Share Point. It is a technology enabling
documents sharing, MSO Excel above all.

Analysis, Design, Impelementation, Business in practise - 4 steps in the MBE project

- We will compare set management system - MBE with reality
(while analyzing complete with an organizational structure).
- A IP will set up during design and it will be completed
with indicators, strategy and significant solving areas.
Here will be the MBE disintegration with the organizational
structure.
- If we have a prepared MBE management system
in shared environment, we can implement it into practise.
- Operations in practise take place in shared environment
(MS SP) with periodic IP evaluating, meetings, coaching,
individual interviews and cooperation.



Palatinum s.r.o.

Na Květnici 20, Praha 4, 140 00
Czech Republic
info@palatinum.cz
www.palatinum.cz

Tel.: +420 261 223 353
Fax: +420 261 223 353
GSM: +420 723 293 881